

# THE GIRL FROM IPANEMA

501

FΔ7

G7

Jobim/De Moraes 1963



Tall and tan and young and love-ly, the girl from I - pa - ne - ma goes walk - ing, and when  
 When she walks, she's like a sam - ba, that swings so cool and sways so gen - tle, that when  
 Tall and tan and young and love-ly, the girl from I - pa - ne - ma goes walk - ing, and when

G-7

G♭7

1. FΔ7

G♭7

2. FΔ7

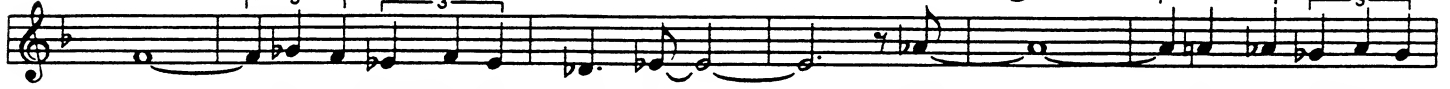


she pass - es, each one she pass - es goes "ahh" "ahh" Fine  
 she pass - es, each one she pass - es goes see.  
 she pass - es, I smile, but she does - n't

G♭Δ7

B7

G♭-7

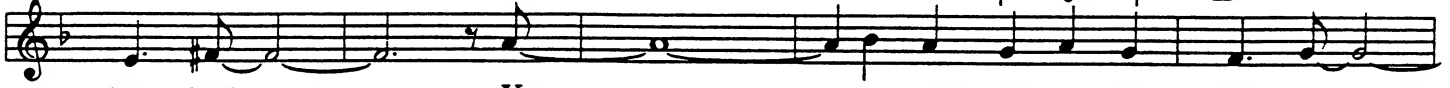


Oh, but I watch her so sad - ly How can I tell her I

D7

G-7

E♭7



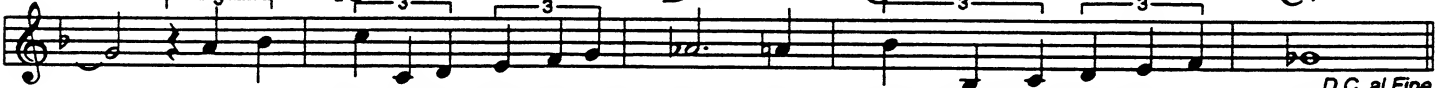
love her? Yes, I would give my heart glad - ly,

A-7

D7<sup>b9</sup>

G-7

C7<sup>b9</sup>



but each day as she walks to the sea, she looks straight a - head not at me. *D.C. al Fine*

# THE SHADOW OF YOUR SMILE

Johnny Mandel/Webster 1965

**A**

F#-7

B7

B7<sup>b9</sup>

E-7

A7



The sha - dow of your smile when you are gone Will col - or all my  
 Our wist - ful lit - tle star was far too high A tear - drop kissed your

1. A-7

D7

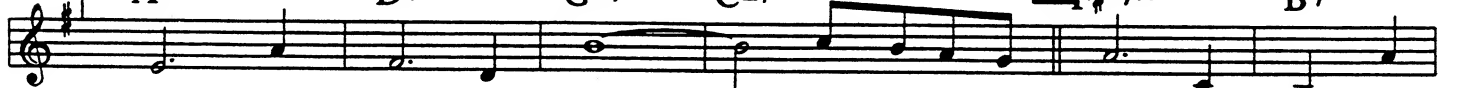
GΔ7

CΔ7

**B**

F#-7<sup>b5</sup>

B7



dreams and light the dawn Look in - to my eyes my love and

E-7

E-7/D

C#-7<sup>b5</sup>

F#7<sup>b9</sup>

F#-7

B7



see all the love - ly things you are to me Our wist - ful lit - tle

1. A-7

D7

B-7<sup>b5</sup>

E7alt

**C**

A-7

C-7

F7

B-7

F7



lips and so did I. Now when I re - mem - ber spring, all the joy that love can bring,

E7<sup>sus4</sup>

E7<sup>b9</sup>

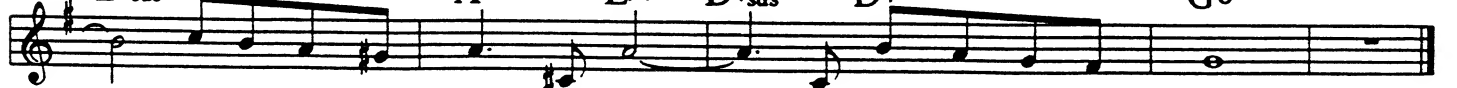
A7

E♭7

D7<sup>sus4</sup>

D7<sup>b9</sup>

G6



I will be re - mem - ber - ing the sha - dow of you smile.